

# INSTRUCTIONS

## Dry Contact Closure Interface

### Overview

#### LuXout Shades Dry Contact Closure



Contact closure interfaces allow integration of the Automation© systems throughout the house. The contact closure interface communicates to LuXout Shades via ARC™ RF communication. Each interface can control one group or one shade using two conductor - one pair #18 AWG (1.0mm<sup>2</sup>), class 2 cable.

Many electronic systems and devices have the capability to provide status or control in the form of dry contact closure (relay/switch) outputs. Each individual device output can be connected to a contact closure input. The contact closure input is programmed from a channel on a LuXout keypad.

Model Number	LS-CCI: Wired Contact Closure Input Interface
Input Voltage	12V  (from Automation System). 240z12V
Environment	Ambient operating temperature: 0°C to 40°C, 32°F to 104°F. Ambient operating humidity: 0-90% humidity, non-condensing. Indoor use only.

#### LuXout Shades SPECIFICATION SUBMITTAL

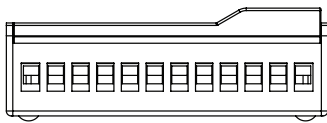
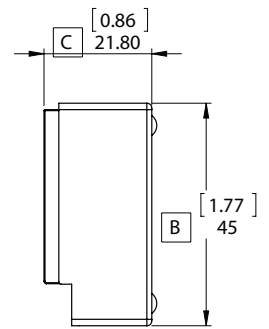
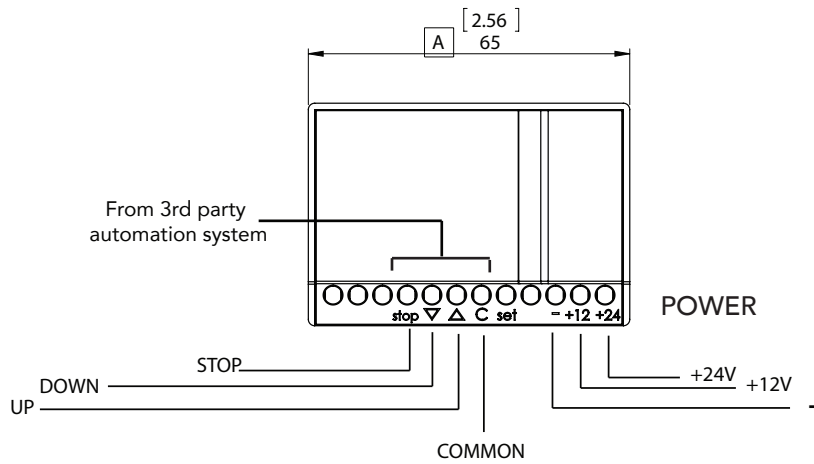
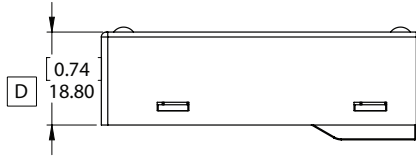
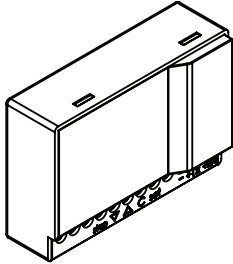
Job Name:	Model Numbers:	
<input style="width: 90%;" type="text"/>	<input style="width: 45%;" type="text"/>	<input style="width: 45%;" type="text"/>
Job Number:	<input style="width: 45%;" type="text"/>	<input style="width: 45%;" type="text"/>

# INSTRUCTIONS

## Dry Contact Closure Interface

### Overview

#### LuXout Shades Dry Contact Closure



To test without using 3rd party automation:

- use a paper clip to short C (common) terminal, with either up, down, or stop.
- shorting C with up, down, or stop, will send the corresponding command to the shade motors.

Contact closure interface controls 1 group of shades.

To pair the contact closure with a group of shades, you must use a remote.

Select channel on remote.

Press P2 on remote one time. The motor will respond.

Press P2 on remote again. The motor will respond.

Press Set button on contact closure. The motor will respond.

#### LuXout Shades SPECIFICATION SUBMITTAL

Job Name:	Model Numbers:	
<input type="text"/>	<input type="text"/>	<input type="text"/>
Job Number:	<input type="text"/>	<input type="text"/>