

INSTRUCTIONS

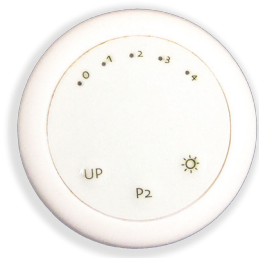
LuXout Shade Controller Programming Instructions

LuXout Shades

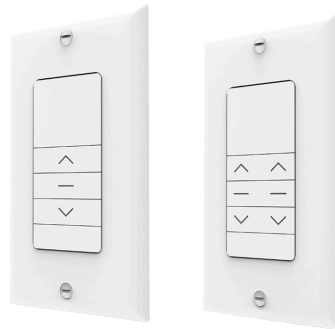
Shade Controller Programming Instructions



STANDARD 5-CHANNEL
CONTROLLER
WALL FLUSH MOUNT



OPTIONAL
SUN SENSOR



OPTIONAL 1 & 2 CHANNEL
IN-WALL CONTROLLER

INSTRUCTIONS

LuXout Shade Controller Programming Instructions

CONTENTS

5 Channel Controller

1. Functional Overview	1
2. Quick Start Guide	5
3. Install/Replace Controller Battery	6
4. Charging Rechargeable Battery Motor	6
5. Mounting Instructions	6
6. Initial Set-Up	7
• Pair Motor with Controller	7
• Check Motor Direction	7
7. Setting And Adjusting Limits	8
8. Favorite Position	9
• Setting Favorite Position	9
• Deleting Favorite Position	9
• Using Favorite Position	9
9. Adding/Removing Controllers & Channels	10
10. Adjusting Motor Speed	11
11. Troubleshooting	12

Optional In-Wall 1 & 2 Channel Controller

1. Functional Overview	13
2. Install/Replace Controller Batteries	15
3. Mounting Controller	15
4. Setting/Adjusting Limits	15
5. Adding/Removing Controllers & Creating Group Channels	15
• Pairing Controller to Motor	16
• Using a Pre-Existing Controller	16
6. Troubleshooting	17

Sun Sensor

1. Functional Overview	18
2. Installation	20
3. Adding/Removing Sensor & Creating Group Control	21
4. Troubleshooting	22

SAFETY & FCC INFORMATION	23
--------------------------------	----

INSTRUCTIONS

LuXout Shade Controller Programming Instructions

5-CHANNEL CONTROLLER

1. FUNCTIONAL OVERVIEW



The LuXout 5-Channel Controller features a contemporary design and wire-free deployment making it retrofit ready for any location. Perfect for all internal motorized shade control applications, it can be mounted on any surface - wall or optional tabletop pedestal. The slim profile eliminates the need for any holes to be cut in the walls.

- FEATURES:**
- Retrofit-Ready
 - Individual and/or Group Control
 - Compatible with Screwless Decorator Wall Plates
 - Functions as a Handheld or Optional Tabletop Controller

PACK CONTENTS

- Remote (1)
- Wall Fixing Screws & Anchors (2)
- Mountable Magnetic Holder (1)
- Instruction Manual (1)
- 3V - CR2430 Battery (installed) (1)
- White Single Gang Decorator Wall Plate (1) (including 2 Mounting Screws)
- Pre-programmed Guide

* OPTIONAL Tabletop Pedestal (if ordered)

TOOLS NEEDED:

- Phillips Head Screwdriver
- Flat Head Screwdriver

Important Note:

One 5-channel controller is provided for each room with your order. One rechargeable battery charger is also provided for each room of shades with rechargeable battery motors.

INSTRUCTIONS

LuXout Shade Controller Programming Instructions

Fig. 1

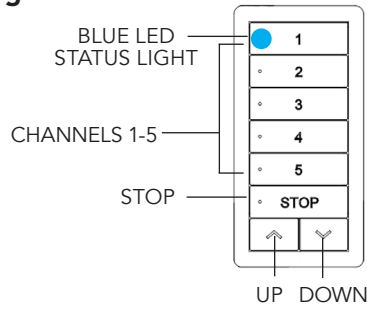


Fig. 2

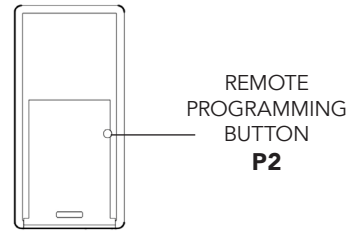


Fig. 3

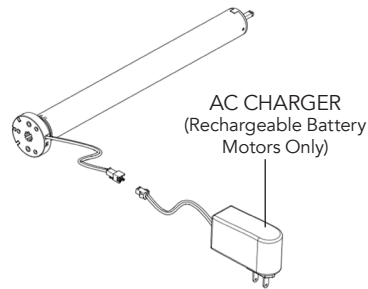
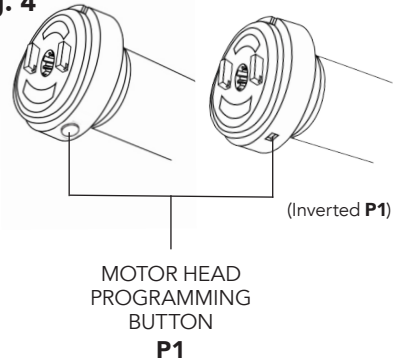
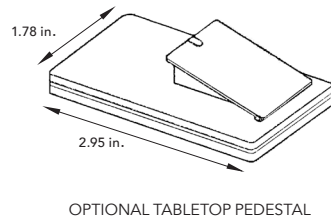
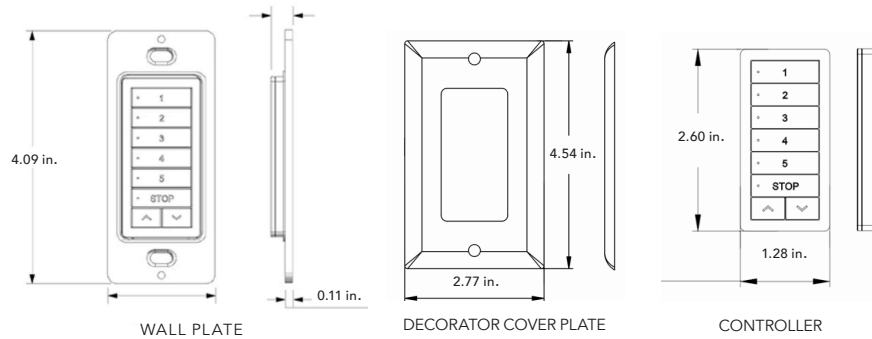


Fig. 4



DIMENSIONS



TECHNICAL SPECIFICATIONS

Input Voltage	3V (CR2430)
Transmitting Frequency	433.92 MHz
Transmitting Power	10 milliwatt
Operating Temperature	-10°C - 50°C
Transmitting Distance	up to 75 feet

INSTRUCTIONS

LuXout Shade Controller Programming Instructions

2. QUICK START GUIDE

QUICK START

1.

Each motorized shade from LuXout Shades comes pre-programmed from the factory. The pre-programming assures the controller is paired with the motor(s) in a room, the upper and lower limits of the shade are set, and the motor is in sleep mode.

2.

After installing the shade, wake up the motor by pressing and releasing the **Program Button (P1)** (**Fig. 4**) on the motor head. Once the **P1** button has been pressed, the shade will move to its lower limit indicating that the shade is now awake.

3.

Once all shades are awake, the LuXout Controller is pre-programmed with one shade per channel button (or one group of shades per channel button*). Press the **first button #1**, and the **blue LED** will light. Press the **"UP"** arrow button and the shade will move (**Fig. 1**) to its upper limit and stop at the top of the window.

4.

Repeat step 3 for each button.

5.

To operate multiple shades or groups, press each channel desired and the blue LED will indicate each channel selected (**FIG. 1**).

6.

It is important to note that one channel will always be in enable mode.

* A group can be one or multiple shades per button.

INSTRUCTIONS

LuXout Shade Controller Programming Instructions

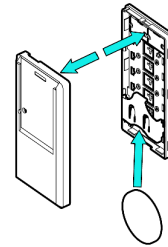
3. INSTALL AND/OR REPLACE CONTROLLER BATTERY

The battery comes installed when shipped with shade.

- a.** Open rear battery cover by gently separating switch covers with a flathead screwdriver.



- b.** Install CR2430 battery with positive side facing up. Snap covers back together.



4. CHARGING SHADES

For rechargeable battery motors (Fig. 3 - see inside cover page)

This motor has a 12V built-in Li-ion battery pack with integrated charge management. Max power input for recharging: 12.6V/1000mAh

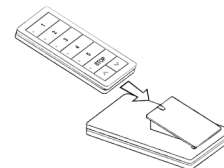
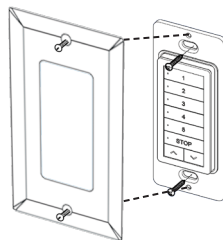
- During operation, if voltage drops to less than 10V, the motor will beep 10 times to prompt when it needs to be charged.
- Motor will stop running when the voltage is lower than 7V and will resume again when the voltage is greater than 7.5V.
- When charger is plugged in, a red LED light indicates the motor is currently charging. A green LED light indicates that battery is fully charged.



- Ensure cable is kept clear of fabric.
- Ensure antenna is kept straight and away from metal objects.

5. MOUNTING INSTRUCTIONS

Use the supplied fasteners and anchors as needed to attach the base.



Slide controller into base.

Best Practice Tip: To insure best performance, program controller to motors prior to installation at the location the controller will be located. Then test radio performance for that location.



- The 5-Channel Controller is magnetized and can be removed for hand held operation.

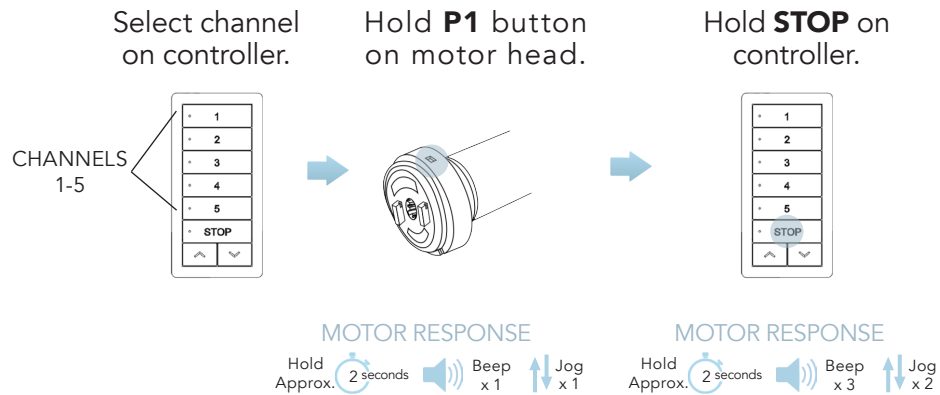
INSTRUCTIONS

LuXout Shade Controller Programming Instructions

6. INITIAL SET UP

6.1 PAIR MOTOR WITH CONTROLLER

Controllers purchased with shades already have the controller paired to the motor.

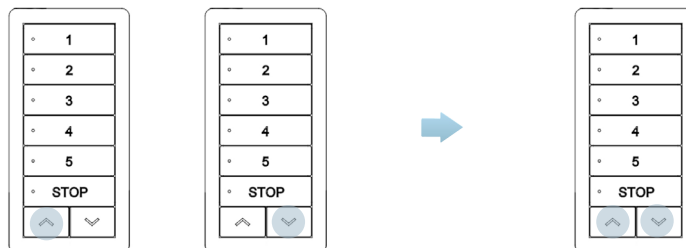


6.2 CHECK MOTOR DIRECTION

This has been done in factory prior to shipment.

To check travel direction of shade, press **UP** or **DOWN** on controller.

To reverse shade direction, hold both **UP** and **DOWN**.



- Quick Press = Step
- Long Press = Continuous Travel

MOTOR RESPONSE
Hold Approx. 2 seconds Jog x 1

- ⚠ • Damage to shade may occur when operating motor prior to setting limits. Attention should be given.
- Reversing motor direction using this method is only possible during initial set-up.

INSTRUCTIONS

LuXout Shade Controller Programming Instructions

7. SETTING AND ADJUSTING LIMITS

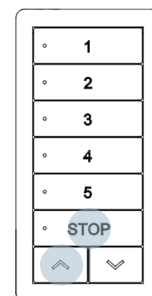
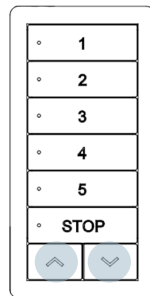
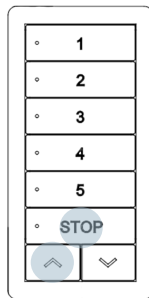
Initial limits are set to field measurements provided at time of order.

Adjusting Upper Limit - move to existing upper limit

Hold **UP** and **STOP** on controller.

Move shade to the desired highest position by pressing the **UP** or **DOWN** button.

To save upper limit, hold **UP** and **STOP**.



MOTOR RESPONSE
Hold Approx. 5 seconds Beep x 1 Jog x 2

- Quick Press = Step
- Long Press = Continuous Travel

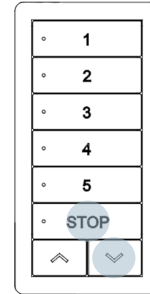
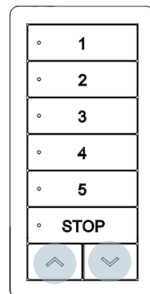
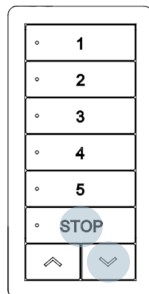
MOTOR RESPONSE
Hold Approx. 5 seconds Beep x 3 Jog x 2

Adjusting Lower Limit - move to existing lower limit

Hold **DOWN** and **STOP** on controller.

Move shade to the desired lowest position by pressing the **DOWN** or **UP** button.

To save lower limit, hold **DOWN** and **STOP**.



- Quick Press = Step
- Long Press = Continuous Travel

MOTOR RESPONSE
Hold Approx. 5 seconds Beep x 3 Jog x 2

INSTRUCTIONS

LuXout Shade Controller Programming Instructions

8. FAVORITE POSITION

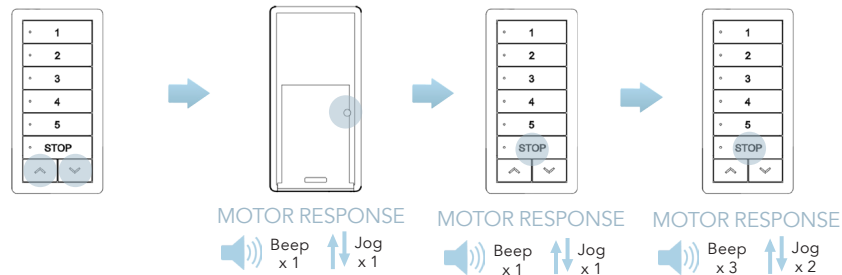
8.1 Setting Favorite Position

Move shade to the desired position by pressing the **UP** or **DOWN** button on the controller and stop shade at the favorite position.

Using the programming stylus tool (included) press **P2** on controller.

Press **STOP** on controller.

Press **STOP** on controller again.

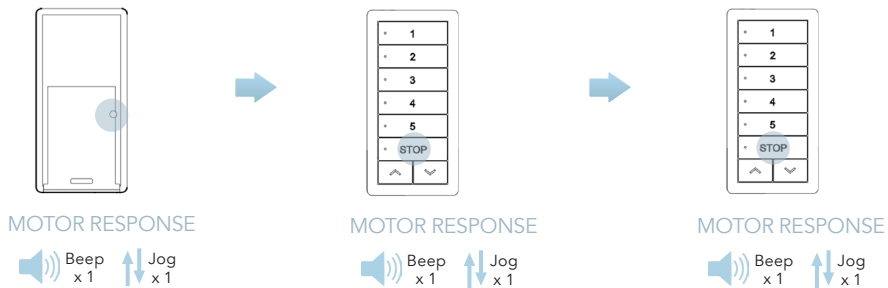


8.2 Deleting Favorite Position

Press **P2** on controller.

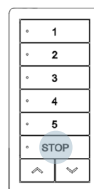
Press **STOP** on controller.

Press **STOP** on controller.



8.3 Using Favorite Position

Hold **STOP** on controller.



Hold Approx. 2 seconds

INSTRUCTIONS

LuXout Shade Controller Programming Instructions

9. ADDING AND REMOVING CONTROLLERS & CHANNELS

A = Existing controller or channel (to keep)
B = Controller or channel to add or remove

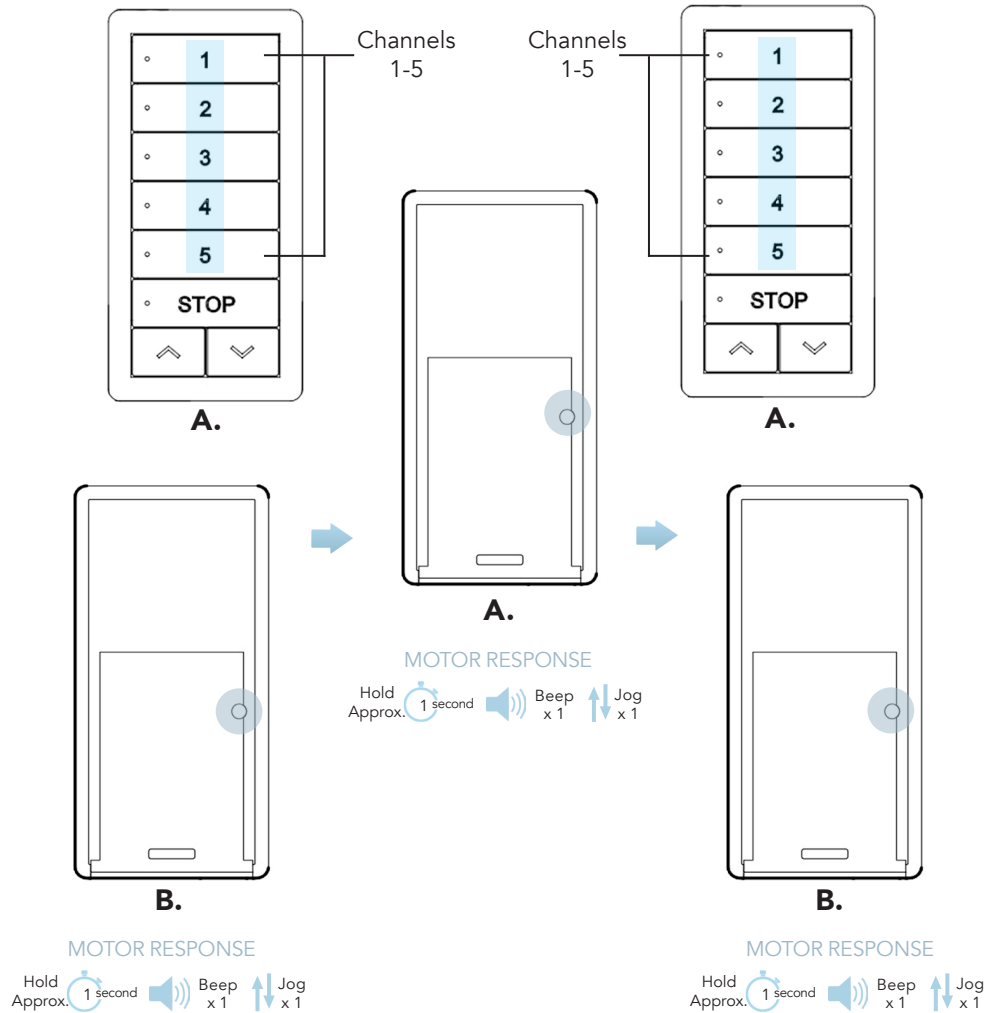
A. Select channel that operates motor on existing controller.

B. Press P2.

A. Press P2 on existing controller again.

A. Select desired channel on new controller.

B. Press P2.

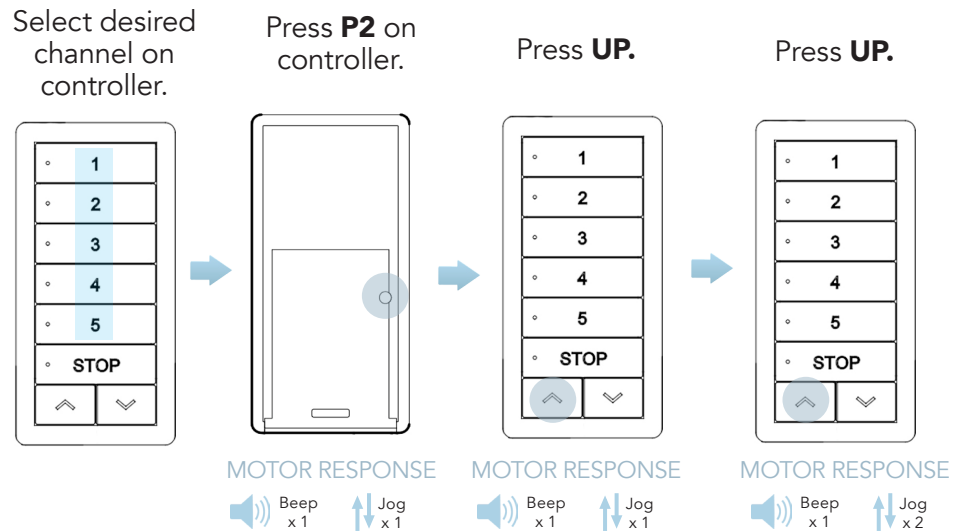


INSTRUCTIONS

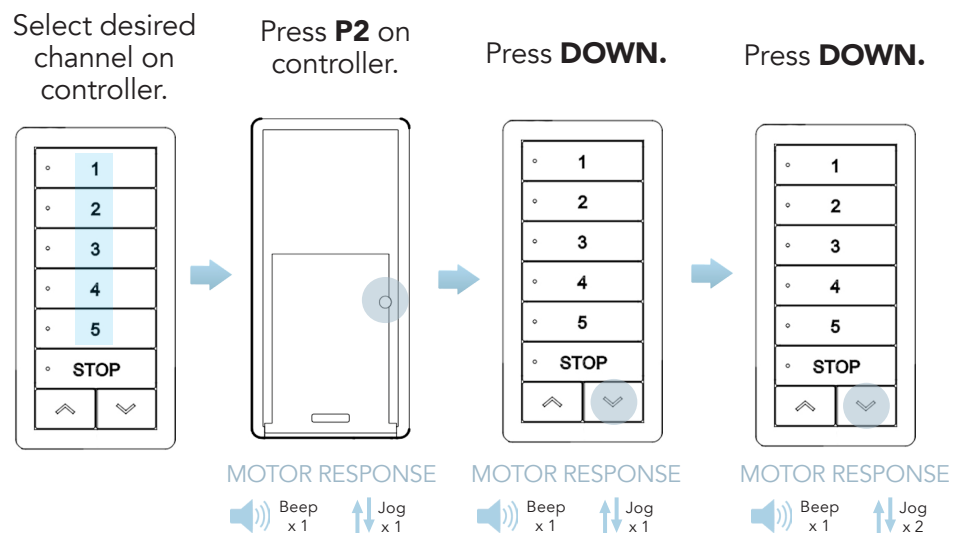
LuXout Shade Controller Programming Instructions

10. ADJUSTING MOTOR SPEED

10.1 Increase Motor Speed



10.2 Decrease Motor Speed



! IMPORTANT

If motor does not react to speed adjustment, the maximum or minimum speed has already been reached. There are only 3 speeds: slow, medium and fast.

INSTRUCTIONS

LuXout Shade Controller Programming Instructions

11. TROUBLESHOOTING

PROBLEM	CAUSE	REMEDY
Motor is not responding	Switch battery is discharged	Replace battery
	Battery is inserted incorrectly	Check battery polarity
	Radio interference/shielding	Ensure controller is positioned away from metal objects and that antenna on motor or receiver is kept straight and away from metal.
	Receiver distance is too far from controller	Move controller to a closer position.
	Power failure	Check power supply to motor is connected and active.
	Incorrect motor plug-in wire connection	Check that wiring is connected properly
	Motor still in sleep mode	If motor is in sleep mode (we ship shades in sleep mode to protect shade) press the P1 button on the motor. Shade will move.
Cannot set limits on a single motor (multiple motor response)	Using "group" channels to adjust single motor limits	Put motors that do not need adjustment into sleep mode. Recharge motor by pressing the P1 button until you get 2 jogs. If a plug-in motor, unplug motors not needing adjustment. Then adjust limits per section 7 (page 7).
Motor will not go down after setting the top limit.	Top limit was set using the DOWN and STOP buttons.	Reset the motor and lower limit. Remember that upper limit is to be set using the UP and STOP buttons, and the down limit is set using the DOWN and STOP buttons.

INSTRUCTIONS

LuXout Shade Controller Programming Instructions

OPTIONAL IN-WALL 1 & 2 CHANNEL CONTROLLER

1. FUNCTIONAL OVERVIEW



1 Channel



2 Channel

In-Wall Channel Controllers feature a contemporary design and a wirefree deployment, making them retrofit ready for any location. Available in single and double configurations, In-Wall Channel Controllers are perfect for individual room control.

FEATURES:

- Available in Single & Double Channel
- Compatible with screwless decorator cover plates
- Retrofit Ready
- Group Control

PACK CONTENTS

- Controller (Single or Double Channel) (1)
- Wall Fixing Screws & Anchors (2)
- Instruction Manual (1)
- 1.5 V AAA Batteries (installed) (2)
- White Single Gang Decorator Wall Plate (1) (including 2 Mounting Screws)
- Pre-programmed Guide

TOOLS NEEDED:

- Phillips Head Screwdriver
- Flat Head Screwdriver

TECHNICAL SPECIFICATIONS

Voltage	3V (CR2032)
Standby Current	SuA
Frequency	433.92 MHz
Transmitting Power	10 milliwatt
Ambient Operating Temperature	-10°C - 50°C
Light Intensity Level Range	15 - 75 Klux
Transmission Range	up to 75 feet

INSTRUCTIONS

LuXout Shade Controller Programming Instructions

1 Channel

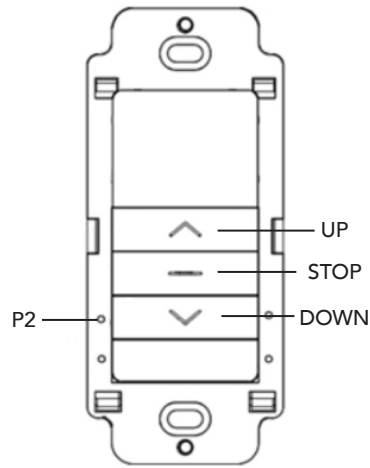


Fig. 1

2 Channel

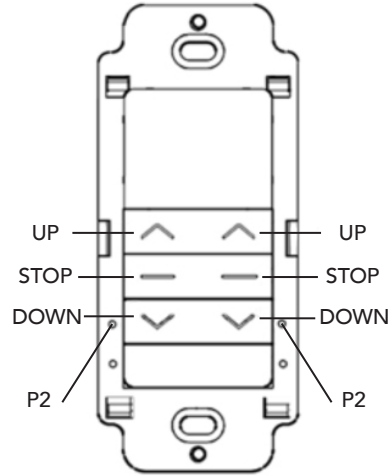
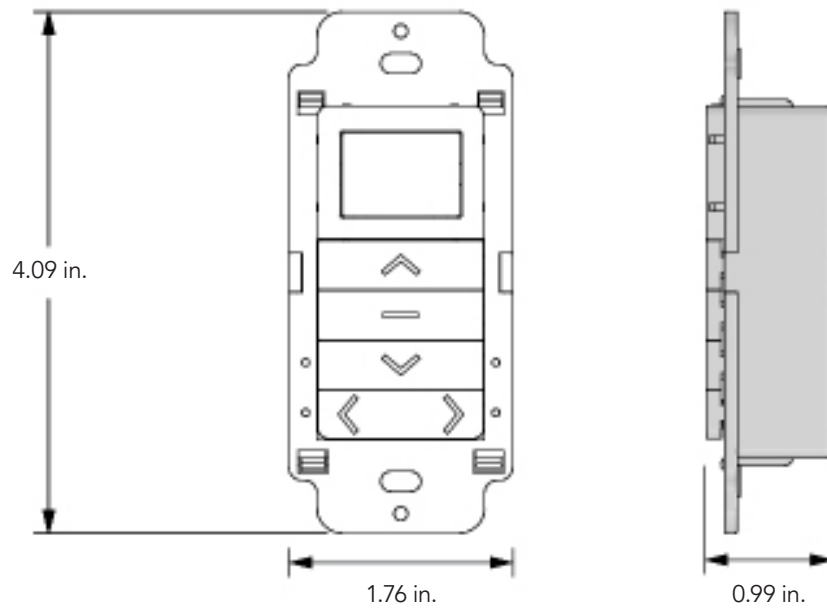


Fig. 2

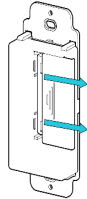
DIMENSIONS



INSTRUCTIONS

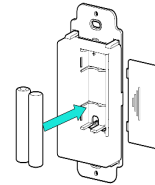
LuXout Shade Controller Programming Instructions

2. INSTALL AND/OR REPLACE CONTROLLER BATTERIES



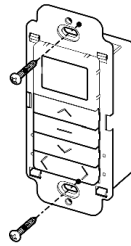
Open rear battery cover by pressing gently in, then sliding down.

Install 2 x AAA batteries with negative side facing springs.



Replace cover by sliding into place.

3. MOUNTING CONTROLLER



Use supplied fasteners and anchors as needed to attach base.

4. SETTING AND ADJUSTING LIMITS

FOLLOW INSTRUCTIONS ON PAGE 7 **Section 7 - Setting and Adjusting Limits**

Same steps will apply for In-Wall 1 & 2 Channel Controllers

5. ADDING / REMOVING CONTROLLERS & CREATING GROUP CHANNELS



Multiple motors can be grouped onto shared channels for coordinated control. Limit settings and favorite positions cannot be adjusted when motors are grouped together.

- Confirm that motor limits and favorite position are already set for each individual motor.
- Ensure that each motor you want to group is also assigned to another channel by itself.

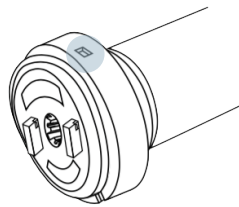
INSTRUCTIONS

LuXout Shade Controller Programming Instructions

5.1 PAIRING CONTROLLER TO MOTOR

Controllers purchased with shades already have controller paired to motor.

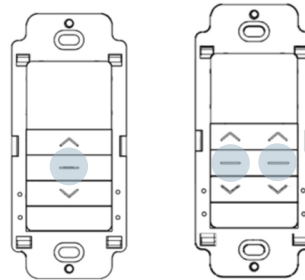
Hold **P1** button on motor head.



MOTOR RESPONSE

Hold Approx. 2 seconds Ext. Beep x 1 Jog x 1

Hold **STOP** on controller.



MOTOR RESPONSE

Beep x 3 Jog x 2

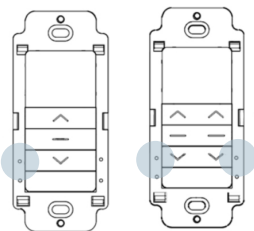
5.2 USING A PRE-EXISTING CONTROLLER

A = Existing controller or channel (to keep)

B = Controller or channel to add or remove.

Press **P2** on existing controller.

A.

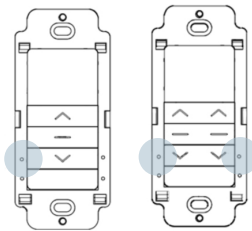


MOTOR RESPONSE

Beep x 1 Jog x 1

Press **P2** on existing controller.

A.

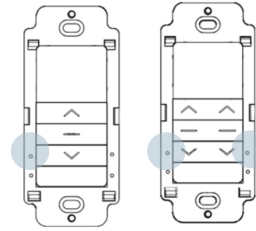


MOTOR RESPONSE

Beep x 1 Jog x 1

Press **P2** on new controller or remote controller.

B.



MOTOR RESPONSE

Beep x 3 Jog x 2

INSTRUCTIONS

LuXout Shade Controller Programming Instructions

6. TROUBLESHOOTING

PROBLEM	CAUSE	REMEDY
Motor is not responding	Switch battery is discharged	Replace battery
	Battery is inserted incorrectly	Check battery polarity
	Radio interference/shielding	Ensure controller is positioned away from metal objects and that antenna on motor or receiver is kept straight and away from metal.
	Receiver distance is too far from switch	Move switch to a closer position.
	Power failure	Check power supply to be sure motor is connected and active.
	Incorrect motor plug-in wire connection	Check that wiring is connected properly
Cannot set limits on a single motor (multiple motor response)	Using "group" channels to adjust single motor limits	Put motors that do not need adjustment into sleep mode. Recharge motor by pressing the P1 button until you get 2 jogs. If a plug-in motor, unplug motors not needing adjustment. Then adjust limits per section 7 (page 7).



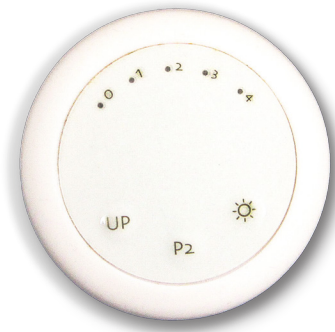
- The switch can be used to set/adjust limits..
- Please refer to the motor instructions for limit setting functions.

INSTRUCTIONS

LuXout Shade Controller Programming Instructions

SUN SENSOR

1. FUNCTIONAL OVERVIEW



For indoor shades, the **Sun Sensor** can automatically close your shades to help control sun glare, protect your interior from UV damage and assist to keep your home cool.

FEATURES

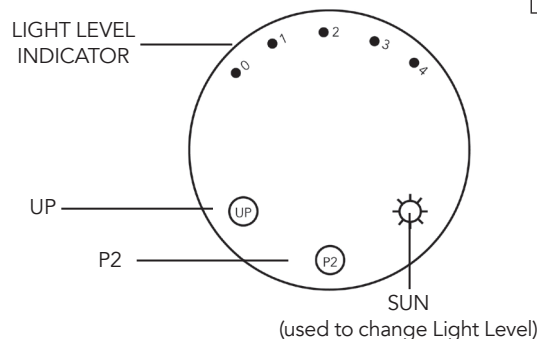
- Discreet device easily mounts to the inside of your window with an adhesive strip.
- Choice of 4 pre-set light sensitivity thresholds. Shades will lower when sunlight intensity goes above the selected level.
- 3 Modes of operation: Mode 1: Close
Mode 2: Open/Close
Mode 3: Shade Detect
- Low battery warning.

PACK CONTENTS

- Sun Sensor (1)
- Instruction Manual (1)
- 3V - CR2032 Battery (installed) (1)

TECHNICAL SPECIFICATIONS

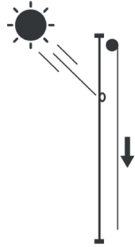
Voltage	3V (CR2032)
Standby Current	SuA
Frequency	433.92 MHz
Transmitting Power	10 milliwatt
Ambient Operating Temperature	-10°C - 50°C
Light Intensity Level Range	15 - 75 Klux
Transmission Range	up to 75 feet



INSTRUCTIONS

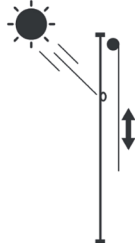
LuXout Shade Controller Programming Instructions

MODES



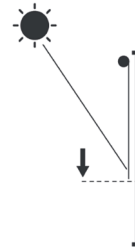
Mode 1 (Default)

Close Mode
Pre-set light level reached
Light level stays above pre-set for 2 minutes
Shade goes down
Shade stays down



Mode 2

Open/Close Mode
Pre-set light level reached
Light level stays above pre-set for 2 minutes
Shade goes down
If light is less than the set level for more than 15 minutes shade goes back up



Mode 3

(exterior shades only)
Shade Detect Mode
Pre-set light level reached
Light level stays above pre-set for 2 minutes
Shade goes down until sensor is covered
Shade goes up until sensor is uncovered
If light is less than the set level for more than 15 minutes shade goes back up

VIEW AND CHANGE SENSOR MODE

To view the current mode, press the **SUN** button for one second.

- 1 blink indicates mode 1
- 2 blinks indicate mode 2
- 3 blinks indicate mode 3

To change the mode:

Hold the **SUN** button until the LED blinks 5 times. The mode has now shifted up by one. (E.g. Mode 2 has changed to Mode 3)

LIGHT LEVELS OF LIGHT INTENSITY VALUES

0 Level	Not Operational
1 Level	15kLUX
2 Level	30kLUX
3 Level	45kLUX
4 Level	60kLUX



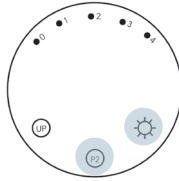
TO CHANGE LIGHT LEVEL SETTING: Press the **SUN** key repeatedly until the desired light level flashes.

INSTRUCTIONS

LuXout Shade Controller Programming Instructions

LIGHT INTENSITY DETECTION

Press the **SUN** and **P2** buttons for one second

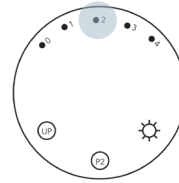


Hold the sensor toward the light.

Response:
The unit will indicate light level

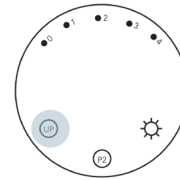
LOW BATTERY NOTIFICATION

When the battery needs changing, the currently selected light level LED will blink every 2 minutes.



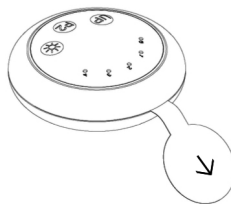
UP BUTTON

The up button can be used to manually override the sensor and tell the shade to go up.



2. INSTALLATION

2.1 SENSOR BATTERY



Pull battery tab out to activate for first use.

INSTRUCTIONS

LuXout Shade Controller Programming Instructions

2.2 MOUNTING

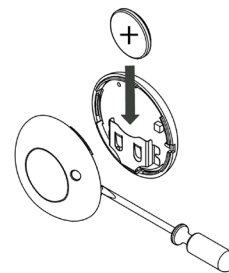
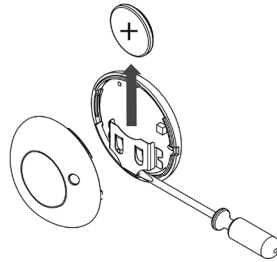
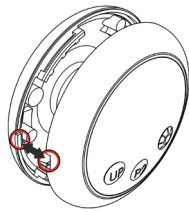
1. Ensure surface on glass is clean and free of dust.
2. Peel clear plastic off the back of sensor to reveal adhesive.
3. Find desired position on glass for the sensor and press adhesive side to glass.

2.3 REPLACING BATTERY

Pry open using flat head screw driver where notches meet on the sensor.

Remove old battery by pressing up from under the battery's position.

Push new battery in with the "+" facing outwards.

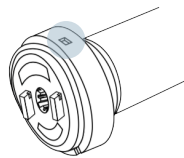


3. ADDING OR REMOVING SENSOR & CREATING GROUP CONTROL

3.1 PAIRING MOTOR TO THE SUN SENSOR

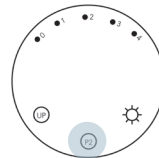
Hold **P1** button on motor head.

Hold **P2** on sensor to add or remove.



MOTOR RESPONSE

Hold Approx. 2 seconds  Beep x 1  Jog x 1



MOTOR RESPONSE

Hold Approx. 2 seconds  Beep x 3  Jog x 2

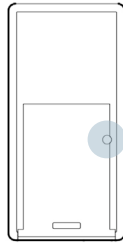
INSTRUCTIONS

LuXout Shade Controller Programming Instructions

3.2 USING A PRE-EXISTING CONTROLLER

- A** = Existing controller or channel (to keep)
- B** = Controller or channel to add or remove.

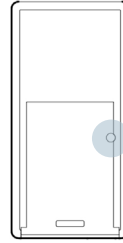
Press **P2** on existing controller.



MOTOR RESPONSE



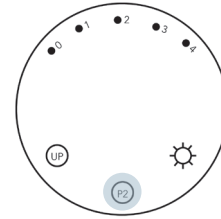
Press **P2** on existing controller.



MOTOR RESPONSE



Press **P2** on new sensor.



MOTOR RESPONSE



Consult user manual for your controller or sensor.

4. TROUBLESHOOTING

PROBLEM	CAUSE	REMEDY
Motor is not responding	Sensor battery is discharged	Replace battery
	Battery is inserted incorrectly	Check battery polarity
	Radio interference/shielding	Ensure controller is positioned away from metal objects and that antenna on motor or receiver is kept straight and away from metal.
	Sensor distance is too far from motor	Move sensor to a closer position.
	Power failure	Check power supply to motor is connected and active.
	Incorrect motor plug-in wire connection	Put motors that do not need adjustment into sleep mode. Recharge motor by pressing the P1 button until you get 2 jogs. If a plug-in motor, unplug motors not needing adjustment. Then adjust limits per section 7 (page 7).