

# LUXOUT SHADES

# SED

(SILENT ELECTRONIC DRIVE)

# MOTORIZATION

Customers are increasingly aware of technologies available today for the natural light control and direct sun and glare protection.

They are demanding more and more comfort in their residential or commercial buildings.

Customers want both visual and acoustic comfort.

LuXout SED enables silent operation of the shades in full harmony with their movements.



LUXOUT SHADES  
SIMPLY BEAUTIFUL

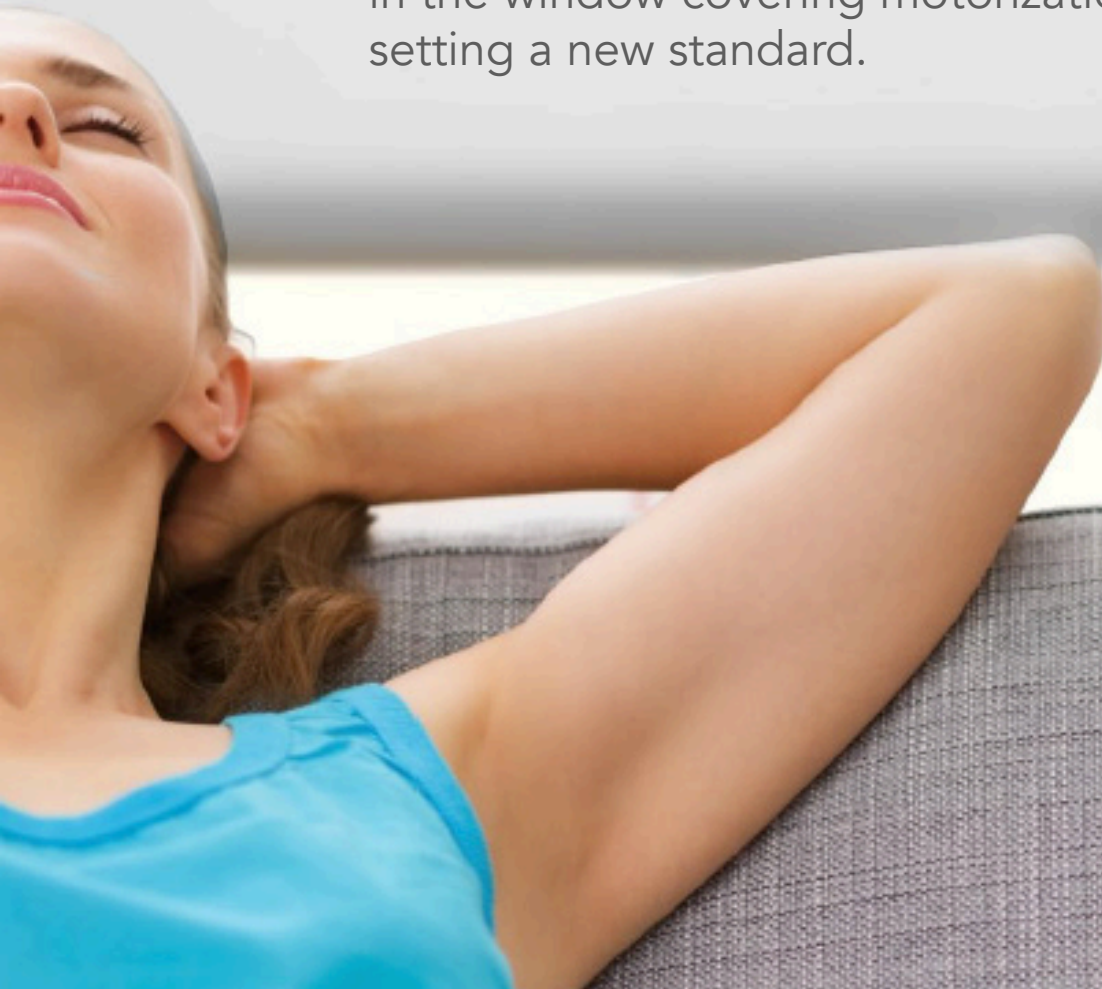




# *Improving the acoustics standards*

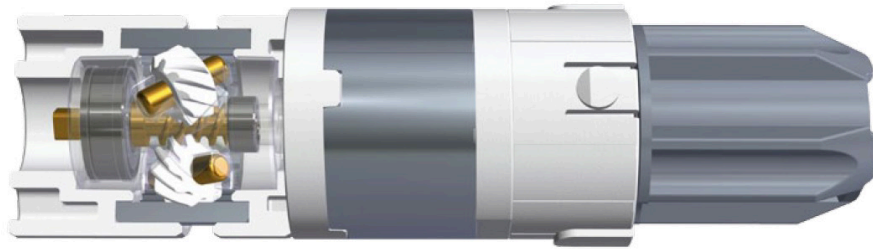
SED's technological leadership in silent electronic drives is proven with its revolutionary planetary worm drive gearing.

This new patented concept is a major innovation in the window covering motorization field, thus setting a new standard.



# LUXOUT SHADES

## SED/DC



*Worm-planetary gearing*

What makes the **SED** so unique is the **planetary worm drive gearing**: It provides an ultra quiet operation without any constraint in using dampening components inside the drive for noise and vibration absorption.

### SED MAIN FEATURES:

- Quiet operations
- Synchronized hembar alignment via constant and controlled speed
- Start and stop speed-ramps
- Power saving
- Easy limits setting
- Easy and safe wiring connection

### SED30DC

The most silent and powerful DC tubular motor in the 25mm range (lift capacity up to 64 sq. ft). The **SED30DC** consists of 2 types of drives: the 25 mm drive (64 sq.ft. shade) and the 28mm (100 sq. ft. shade) drive.

It features synchronized hembar alignment which keeps motor rotation constant in all load conditions for a near perfect alignment of the shades.

### SED50DC

It is the most powerful motor (50mm) of the SED range and assures ultra quiet performance. This feature allows the **SED50** to keep the same acoustic performance even moving multi band or large size shades (up to 200 sq. ft.). So while the drive runs, all you will notice is the glare of the room changing with no noise!

It features synchronized hembar alignment which keeps constant motor rotation in all load conditions for a near perfect alignment of the shades.



LUXOUT SHADES



# LUXOUT SHADES



SED DC silent electronic drives are powered from different power sources according to the type:



## 1 SED RECHARGEABLE BATTERY MOTOR



Battery Charger

**ATTENTION:** Use power charger (purchased from LuXout Shades) to charge the integrated Li\_On battery. Ensure battery is fully charged prior to installation.

1. Connect the charger to the silent electronic drive power cable
2. LED on charger will show the status:  
**Solid Red** = charging  
**Solid Green** = Charging is complete
3. When charging is complete, disconnect and store charger for later use

## 2 SED LOW VOLTAGE PLUG IN POWER OPERATED MOTOR



24V Power Supply

# EASY WIRING POWER SUPPLIES

### CAUTION

- Ensure cable is kept clear of fabric
- Ensure antenna is kept straight and away from metal objects

### NOTES

Cables which pass through a metal wall must be protected and isolated using a grommet or sleeve. Attach cables to prevent any contact with moving parts.

Leave the motor power supply cable accessible: it must be possible to replace it easily.

- Keep unplugged the switching power supply.
- Join the motor power cable connector with the switching power supply connector.
- Hardwired DC morotization is powered by a 5 motor panel

Visit our website or call Customer Service for assistance.

# SLEEP MODE

(only for SED Rechargeable Battery drive)

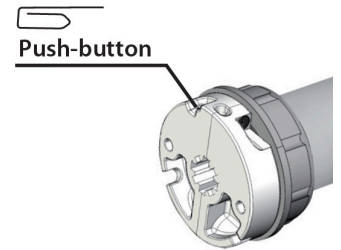
Sleep mode is a status which prevents a drive from moving during shipping or assembling:

**Wake up the drive** = push button short press = the drive makes 1 jog

**Activate sleeping mode** = push button short press = the drive makes 2 jogs

Note: Any short press of the button will wake up or activate sleeping mode

**ATTENTION:** In an installation of several SED rechargeable battery drive wakes up one drive at a time to pair its own controller.



## CONTROLLERS

Limit-switch programming and adjustment are made through the following buttons.

According to the type of controller used these buttons can be placed differently as shown in the pictures.

UP (1) SLIM LINE  
the drive lifts the shade up

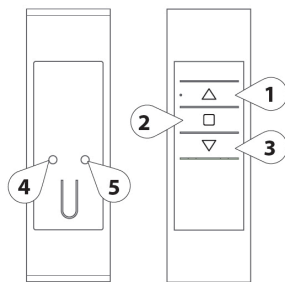
STOP (2)  
the shade stops

DOWN (3)  
the shade goes down

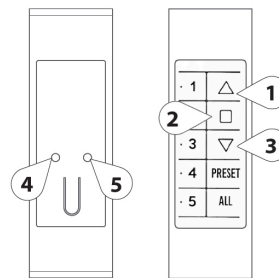
Prog-TX (4)  
record the controller

Prog-FC (5)  
set the limit switch

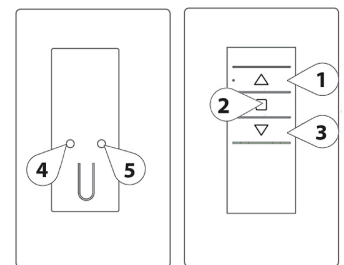
HAND HELD  
ONE CHANNEL  
CONTROLLER



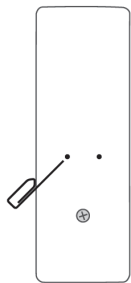
HAND HELD  
5 CHANNEL  
REMOTE CONTROLLER



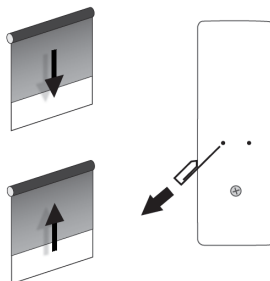
DEKORA STYLE  
5-CHANNEL  
WALL CONTROLLER



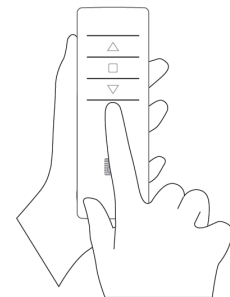
## PROGRAMMING CONTROLLERS



Press and hold PROG-TX button on the back of controller until the drive starts moving



Check the drive rotation then release PROG-TX button (the drive stops)



Within 5 seconds, press the corresponding button (UP if the drive turns upwards or DOWN if the drive turns downwards).  
Controller is now programmed.



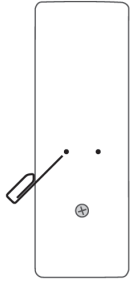
# LUXOUT SHADES

1221 Admiral Street  
Richmond, VA 23220

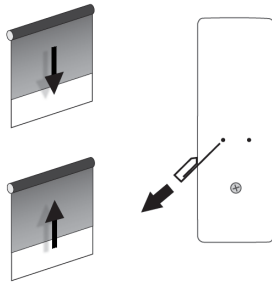
LuXoutShades.com  
Office: 800.817.1204

PROJECT: \_\_\_\_\_  
SPECIFIER: \_\_\_\_\_  
CONTRACTOR: \_\_\_\_\_  
SUPPLIER: \_\_\_\_\_  
DATE: \_\_\_\_\_ REVISED: \_\_\_\_\_

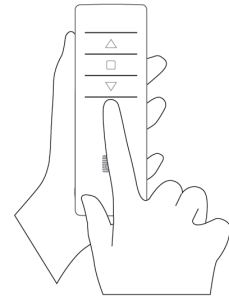
## ADDING CONTROLLERS



Press and hold PROG-TX button on the back of controller already paired till the drive starts moving



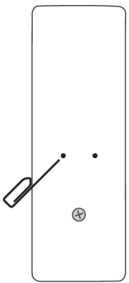
Check the drive rotation then release PROG-TX button (the drive stops)



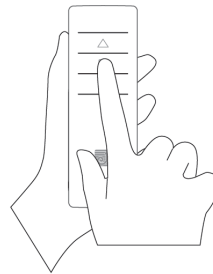
Within 5 seconds, press the corresponding button (UP if the drive turns upwards or DOWN if the drive turns downwards) of a new controller

## CHECKING / CHANGING DIRECTION

Press UP or DOWN the drive should go UP or DOWN, otherwise to change direction:



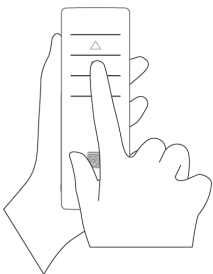
Press and hold PROG-TX button on the back of controller till the drive starts moving



Press STOP: The drive makes a brief jog. Direction the drive has been reversed.

**IMPORTANT:** change direction must be performed before starting limit setting otherwise limits must be reset

## DELETING A CONTROLLER OR A CHANNEL



Using the controller to be deleted press and hold both Prog-TX and STOP buttons till the drive makes a small jog. The controller in your hand has been deleted



# LUXOUT SHADES

1221 Admiral Street  
Richmond, VA 23220

LuXoutShades.com  
Office: 800.817.1204

PROJECT: \_\_\_\_\_  
SPECIFIER: \_\_\_\_\_  
CONTRACTOR: \_\_\_\_\_  
SUPPLIER: \_\_\_\_\_  
DATE: \_\_\_\_\_ REVISED: \_\_\_\_\_

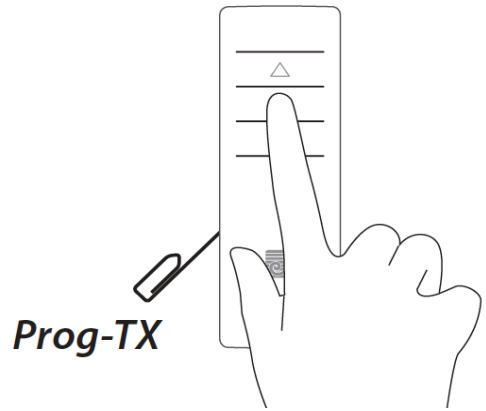
# ERASE CONTROLLER MEMORY

## (DELETING ALL THE CONTROLLERS OR CHANNELS OR SENSORS)

### OPTION 1

#### Using a programmed controller

Press and hold both Prog-TX and STOP buttons for at least 15 seconds: the drive FIRST A BRIEF JOG and after 5 seconds AN ADDITIONAL LONG JOG. Memory is now empty.



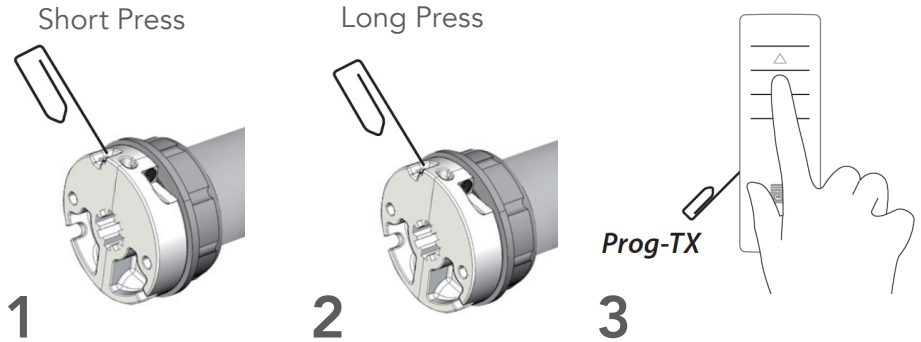
### OPTION 2

#### Using a new controller without ID (not paired)

### for SED Rechargeable Battery

1. Activate sleeping mode: push button short press (the drive makes 2 jogs)
2. Wake up the drive: push button short press (the drive makes 1 jog)
3. Within 8 seconds, using any controller, press and hold both
4. Prog-TX and STOP buttons until the drive makes a long jog.

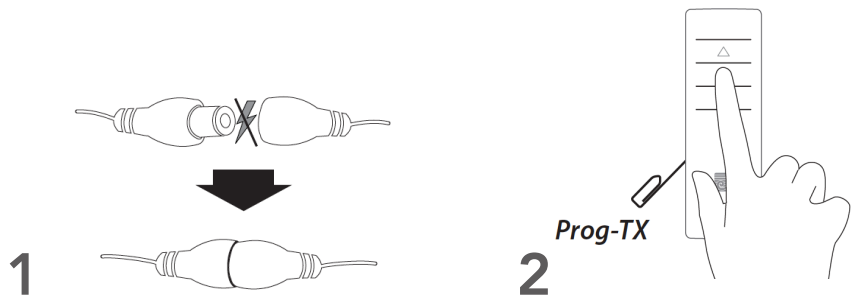
Memory is now empty



### for SED Low Voltage Plug In

1. Switch the drive power supply Off. Then switch it ON.
2. Within 8 seconds, using any controller, press and hold both Prog-TX and STOP buttons until the drive makes a long jog.

Memory is now empty



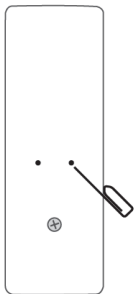
# LUXOUT SHADES

1221 Admiral Street  
Richmond, VA 23220

LuXoutShades.com  
Office: 800.817.1204

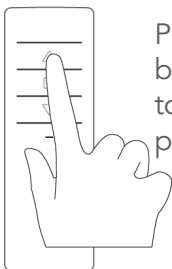
PROJECT: \_\_\_\_\_  
 SPECIFIER: \_\_\_\_\_  
 CONTRACTOR: \_\_\_\_\_  
 SUPPLIER: \_\_\_\_\_  
 DATE: \_\_\_\_\_ REVISED: \_\_\_\_\_

## LIMIT SWITCH SETUP

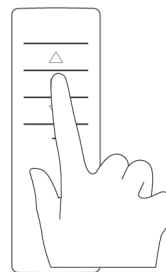


Press and hold PROG-FC button on the back of controller until the drive makes a brief movement in both direction.

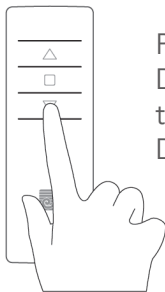
**Note:** during "programming mode" the operations are in "deadman control"



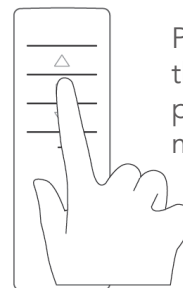
Press and hold the UP button and run the drive to the desired UP limit position.



Press STOP to set the UP limit position. The drive makes a brief jog.



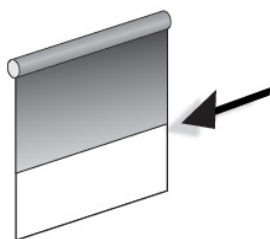
Press and hold the DOWN button and run the drive to the desired DOWN limit position.



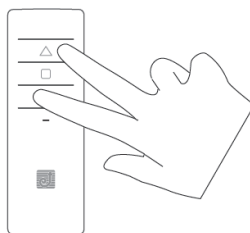
Press STOP to set the DOWN limit position. The drive makes a brief jog.

**NOTE:** Accurate limit setting can be performed when UPWARD or DOWNWARD by pressing a second time PROG-FC: the drive then moves slowly in steps towards to the desired limit. Always press STOP button to set the limit position

## SETTING THE INTERMEDIATE POSITION

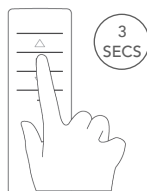


1. Stop the shade in the desired intermediate position



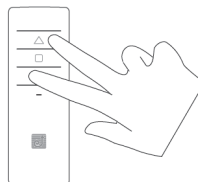
2. Press simultaneously the UP and DOWN buttons until the drive makes a brief jog in both directions. The intermediate position has been set.

## RECALLING THE INTERMEDIATE POSITION



Press and hold the STOP button at least 3 seconds: the shade will move to the intermediate position.

## ERASING THE INTERMEDIATE POSITION



Press simultaneously the UP and DOWN buttons until the drive makes a brief jog in both directions. The intermediate position has been erased.



# LUXOUT SHADES

1221 Admiral Street  
Richmond, VA 23220

LuXoutShades.com  
Office: 800.817.1204

PROJECT: \_\_\_\_\_  
SPECIFIER: \_\_\_\_\_  
CONTRACTOR: \_\_\_\_\_  
SUPPLIER: \_\_\_\_\_  
DATE: \_\_\_\_\_ REVISED: \_\_\_\_\_



# LUXSHADE WIRELESS CONTROLLERS

LUXSHADE wireless controllers are the new range of portable and wall controllers for the control of LUXSHADE electronic drives. They are flexible, expandable, simple to use.

## 1 CHANNEL CONTROLLERS

With Favorite Position



**1-CHANNEL  
HAND HELD**



**1-CHANNEL  
WALL-MOUNTED DEKORA**

## 5 CHANNEL CONTROLLERS

With Favorite Position/ALL



**5-CHANNEL  
HAND HELD**



**5-CHANNEL  
WALL-MOUNTED DEKORA**



# LUXOUT SHADES

## SED (Silent Electronic Drive)



### Wireless

### Wired & Wireless

#### MAIN FEATURES

Models	SED 30DC 25mm Drive
Torque	1.1 Nm
Speed	30 rpm
Power	12 W
Amps	0.85 A
Limit switch type	Electronic
<b>OPTIONS:</b>	
-Built-in radio receiver	

Models	SED 30DC 28mm Drive
Torque	2Nm
Speed	28 rpm
Power	25W
Amps	1.10 A
Limit switch type	Electronic
<b>OPTIONS:</b>	
-Dry contacts -Built-in radio receiver	

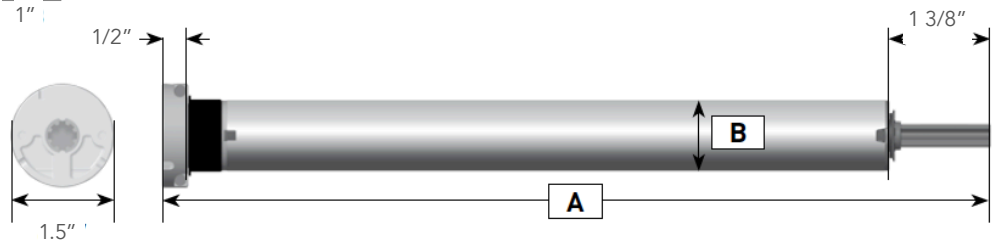
#### TECHNICAL DATA

Voltage	12 VDC
Duty rating	4 min
Radio frequency	434.15 MHz
Protection	IP30
Working temperature	-14°F/+104°F
Insulation class	III

Voltage	24 VDC
Duty rating	4 min
Radio frequency	434.15 MHz
Protection	IP30
Working temperature	-14°F/+104°F
Insulation class	III

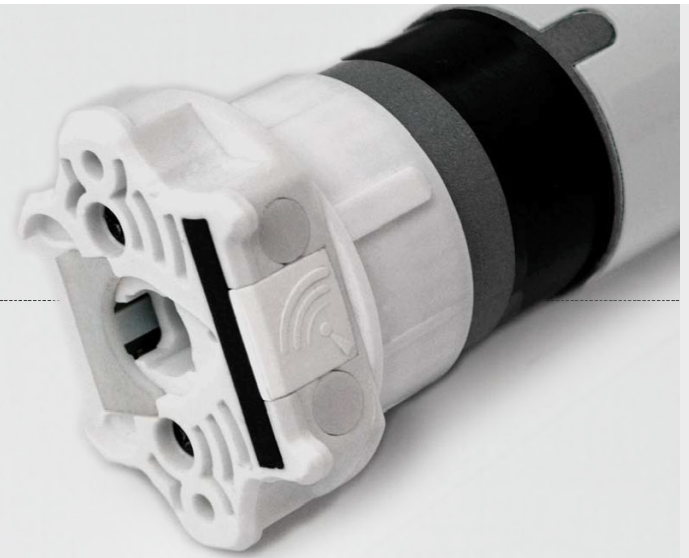
#### DIMENSIONS

Model	A	Ø B
25mm Battery	24" 1"	
28mm Wired	18" 1"	
28mm Battery	24" 1"	



# SED (Silent Electronic Drive)

## DETAILS



### 24V - Low voltage range

#### SED 50 DC 50mm DC Wired

##### Technical details

Torque (Nm)	Speed (rpm)	P. supply (V)	Power (W)	Absorption (A)	Limit switch max turns
4	26	24	55	2.9	55

##### Options:

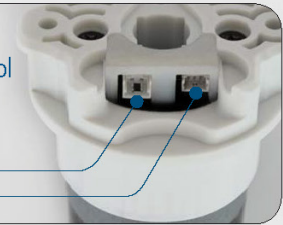
- Dry contacts
- Built-in radio receiver



##### Main features

Standard cable length	0.5 m w/connector	Duty rating	8 min
Wires	2x0.5 mm <sup>2</sup>	Protection	IP30
Working temperature	14°F / 104°F		

Power and Control plug-in cables



### 120V - Line voltage range

#### SED 50 AC 50mm AC Wired

##### Technical details

Torque (Nm)	Speed (rpm)	P. supply (V-/Hz)	Absorption (A)	Limit switch max turns
5	25	120/60	0.9	80 - 28

##### Versions:

- Electronic encoded
- Electronic encoded with built-in radio receiver



##### Main features

Standard cable length	2.5 mt	Duty rating	45 sec ON / 1 min OFF
Wires	3x0.75 mm <sup>2</sup>	Protection	IP44
Working temperature	14°F / 104°F		

